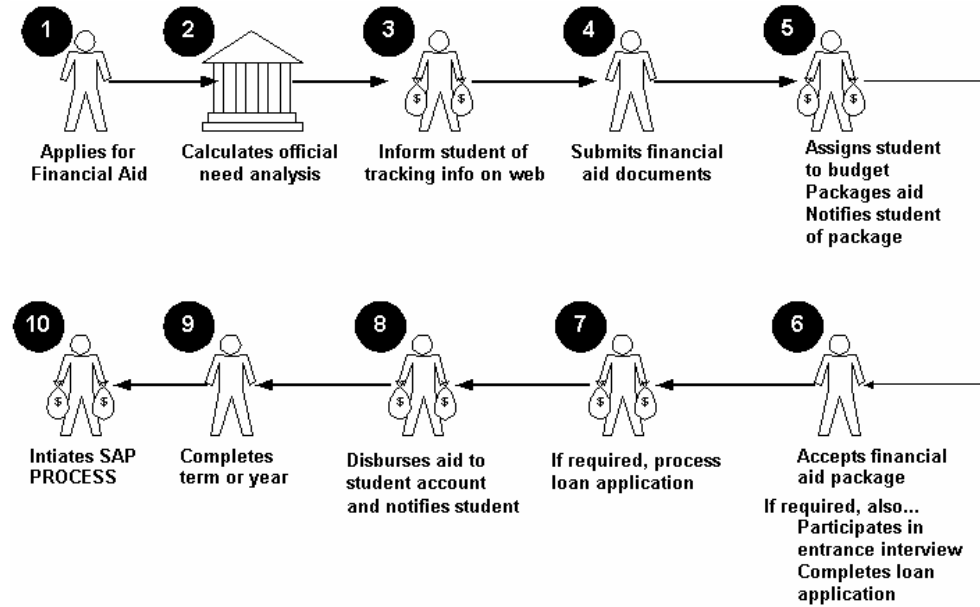
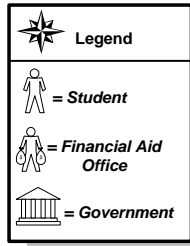


SCT Banner Financial Aid System Overview – Quick Reference

Financial Aid System Overview

Flowchart

The diagram below highlights the high-level processes associated with SCT Banner Financial Aid.



Continued on the next page

Financial Aid System Overview, Continued

SCT Banner Financial Aid modules

The table below contains a brief description of each module that can be accessed from the SCT Banner Financial Aid main menu.

Module	Purpose
Applicant Processing	Contains the forms that you use on a regular basis for the day-to-day processing of student financial aid information.
Need Analysis	The student's financial need is calculated based on the difference between the Cost of Attendance budget and the calculated Expected Family Contribution (EFC) from the Federal Methodology (FM) and/or Institutional Methodology (IM) results.
Requirements Tracking	Permits you to define an unlimited number of documents or statuses that students need to submit or complete.
Budgeting	Calculates and assigns cost of attendance values to each applicant based on budget types in effect at the institution (e.g., tuition, fees, room and board, etc.).
Packaging and Disbursement	Provides a flexible automatic packaging function that allows an unlimited number of ways individual or groups of applicants may be packaged.
Funds Management	Defines and monitors an unlimited number of funds, fund types, and fund associated eligibility rules for the purposes of awarding and disbursing financial aid.
Electronic Data Exchange	Through the EDE module and its communication features, you can receive ISIRs and send Pell corrections. SCT Banner provides a system in which you can load ISIRs into SCT Banner and automatically collect Pell corrections for subsequent processing. SCT Banner eliminates the need to enter information twice for data that you must transmit to the central processor (CPS).
History and Transcripts	Maintains student financial aid records online for use in packaging, financial aid transcript generation, and audit functions.

Continued on the next page

Financial Aid System Overview, Continued

SCT Banner Financial Aid modules, continued

Module	Purpose
Financial Aid Common Functions	Maintains frequently used financial aid functions.
Student System Shared Data	Integrates the SCT Banner Student System with the Financial Aid System. This option permits you to view information in Recruiting, Admissions, Registration, Housing, Accounts Receivable, and Academic History. Information in these Student System areas is important to the financial aid decision-making process.
Short-Term Credit	Allows you to build history files on a student's short-term loans. This module is not interfaced with any other system.
Student Employment	Performs the referral, placement, hours submission, and tracking functions for student employees.
Loan Processing	Enables you to process Direct Loans, FFELP Common Line loans, and Manual Loans.
Return of Title IV Funds	The Return of Title IV Funds module and Title IV Authorization module functionality assists you in complying with the Title IV regulations for federal financial aid. Title IV features involve the SCT Banner Accounts Receivable, Student, and Financial Aid products.